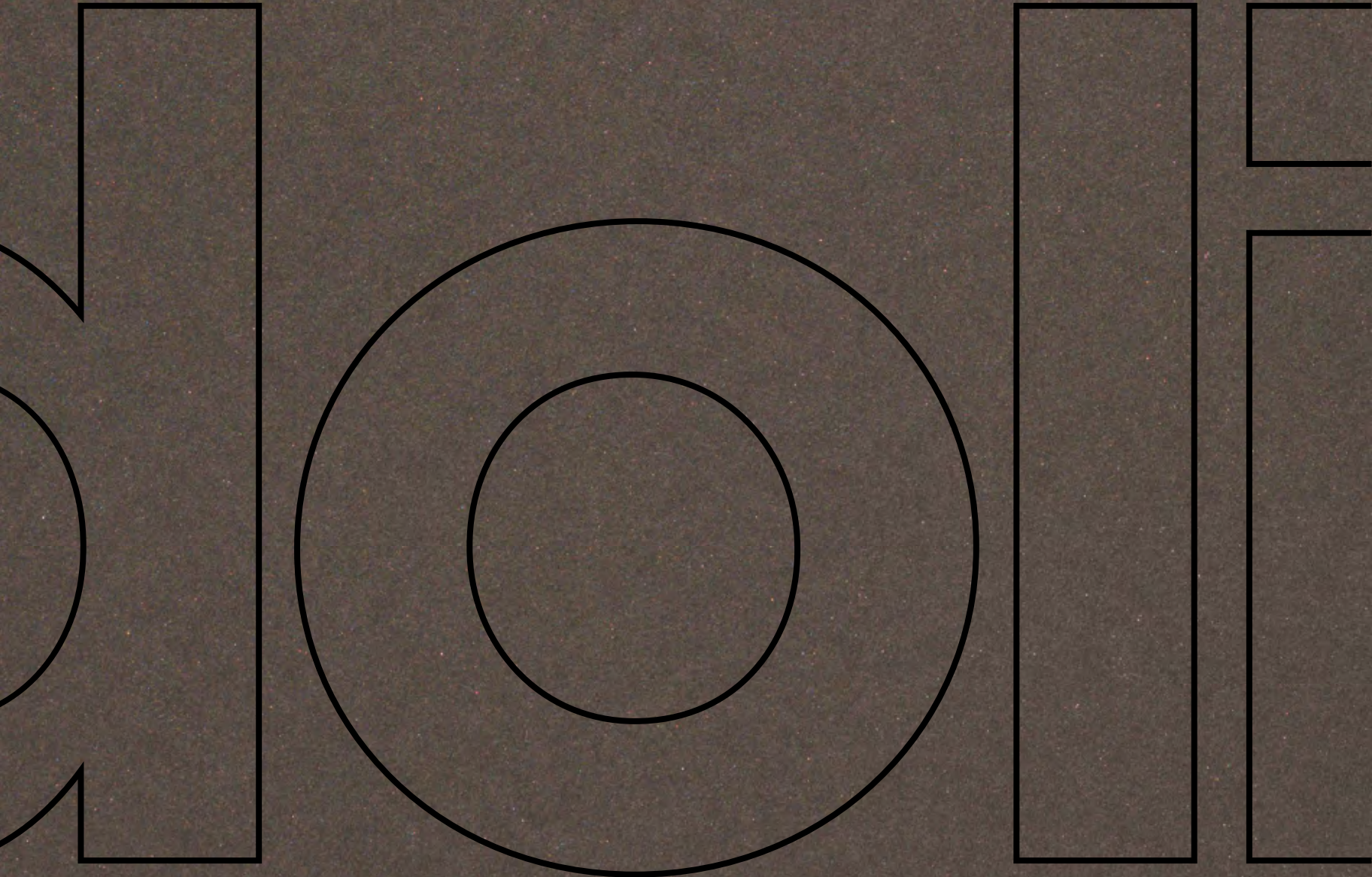


wardrobe collection



indoline.in

Indoline

power to deliver.

Think Future, Think Indoline

Our journey began thirty years ago in 1989 as an offshoot of the Al Huzaifa Group, a Dubai-based firm with multiple interests. What started off as an interest in customized furniture, Indoline over the decades has grown into a leading modular furniture manufacturing company of India.

Apart from including the whole gamut of manufacturing capabilities, Indoline also has a vast range of clientele, from residential to hospitality, from retail to organisational. This unique combination allows Indoline to offer a wide variety of highly customised modular solutions with the best-in-class quality and after-sales service.

In addition to an ISO certification, Indoline also holds the distinction of being a GREENCO Certified company – an achievement that proves our dedication to environmental consciousness.

PARENT COMPANY


AL HUZAIFA
furniture

Credo

Our belief systems towards...

EMPLOYEES

- Create opportunities through continuous challenging and training
 - Create future leaders
- Provide an opportunity to be a part of a team to create something bigger than all of us put together
 - Respect and concern for the individual
 - Be in partnership with employees

INNOVATION

- Be a trend setter / pioneer in any product lines launched
 - Add value in lives of consumers through our products
- Insatiable desire for continuous improvement and product excellence.
 - Fanatical attention to consistency and detail

CUSTOMERS

- Be insanely passionate to create success for our customers
 - Go the last mile to ensure customer satisfaction
 - Treat customers as business partners

VENDORS

- Treat them as partners
- Involve them to create value in lives of consumers

SOCIAL RESPONSIBILITY

- Be a law abiding company with all employees being trained to be good citizens
 - Contribute towards government initiatives to usher positive change
 - Create a spirit of being Indian irrespective of caste and creed
 - Contribute to the society through contribution to social causes
 - Contribute to the future of this planet through green initiatives

Indoline

Purpose of existence

• Provide **innovative**,
designer modular solutions

• Be a **leader** in every
product/vertical and market

• Be a **global** brand

Indoline

wardrobe collection

Revolutionary and Rebellious – This range of **wardrobes** from the house of Indoline represents the coming of age for wardrobe design.

Encapsulating just about every nuance between Modern and Minimalistic to Traditional and Timeless, this range transforms what is essentially a storage unit into an extension of the person using it. In the same breath, recessed and inbuilt handles provide a silent touch of excellence that is a design purist's dream come true.

Through this range, we endeavor to give a befitting personal touch to every room.

After all, the structures that secure our belongings should effortlessly showcase our style as well.

CARINA

Rustic and Refined.

Artificial leather tailored to the T with precise stitching and matching edges adorns doors that have inbuilt handles and European inline system fittings to present a rustic yet refined look.





RAMOLLA

Contrasts Reimagined.

With an eclectic combination of lacquer and membrane on a handle less two door overlay European fitting, this design is an example of contrasts reimagined to create a posh look.



ELEOS

Sleek and Well Edited.

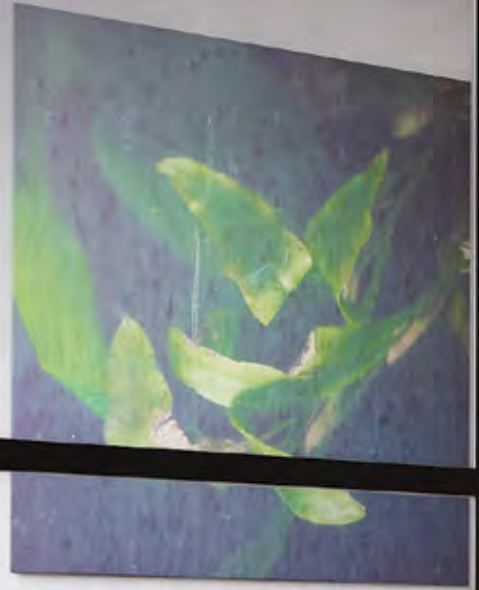
An exclusive designer door finished with matt lacquer tactfully hides a beautiful recessed lacquered handle to create an extremely sleek and well edited design.

Indoline

TANIYA

A Collage of Visuals.

Lacquer doors and a beautiful handle subtly enhance this refreshing design that brings together enclosed and open spaces to create a picturesque collage of visuals.





IRENE

Delightfully Luxurious.

High quality veneer handles with inbuilt lights marry a lacquer finished designer door to finish a design that looks delightfully luxurious and remarkably upscale.



LEONE

Less is More.

Handle-less but boasting of features such as exclusive three panel designer door, overlay system sliding door and a combination of PU and PVC make this a classic example of Less is More.

KAYLA

Functionally Smart.

Comprising of 3-door overlay European sliding fittings, an exclusive designer door and inbuilt handle covered with a combination of PVC and PU, this feature rich design is truly functionally smart.



ATHENA

Contemporary and Urbane.

Precise and refined, this design includes a sliding designer door with membrane front and recessed membrane designer handles for a truly contemporary and urbane look.

Utilitarian yet Unique.

Mixing features such as 3-door overlay European sliding fittings, an exclusive designer door and inbuilt handle covered with a combination of PVC and PU, this design is as utilitarian as it is unique.



EIRENE

Playfully Layered.

Consisting of contrasting textures such as mat and gloss that are playfully layered over a 4 door syncro Hettich fitting, this design strikes an impeccable balance between imagination and function.



LEXIA

Minimalistic and Uncluttered.

Taking a contrarian and uncluttered approach, this minimalistic design delivers oomph with a glossy lacquer finished designer door and inbuilt matt lacquered handles that come in three options.




Stunningly Reflective.

Tastefully encapsulating a 2-door overlay European fitting within a stunningly reflective high gloss designer lacquer door and inbuilt lights, this design is a true polished masterpiece.

VESTA

Dashing Duet.

A 3-door format with an overlay European sliding system covered in a duet of high glossy PU colors gives this design a truly dashing look.



LUCIANA

Mesmerizing Maroon.

This 8-Door design finished with PU High Gloss and Matt PU finish recessed designer handles come garbed in a mesmerizing tone of maroon that befits the outgoing individual between imagination and function.



FORTUNA

Larger than Life.

The glossy exterior over a massive 8 door wardrobe with built in full height handles comes across as the ideal definition of Larger than Life.

Winning with Veneer.

This design showcases a delicate sense of style with an openable door and veneer covered recessed handles that are finished with a Matt PU.





LABELLA

Luxurious Leatherite.

This 8-door wardrobe with recessed handles is luxuriously layered with Matt PU and an exclusive Leatherite finish.



AMEDEO

Subtle yet Stylish.

This design offers a subtle yet stylish look with a 6 Doors in high gloss lacquer combined with recessed designer handles in Matt PU finish.

Indoline



ADELINE

A Peek Inside.

Extra clear glass with color matched Matt PU edges adorn an exclusive designer profile door that offers a judicious peek inside the wardrobe.

Indoline



Membrane and Mirror.

A contrasts of finishes work together brilliantly to give this 3 Door wardrobe with overlay sliding European fitting a starkly different look.



VALENTINA

Matt Matters.

With 6 Doors and recessed designer handles all finished with Matt PU this openable wardrobe is truly a celebration of the Matt finish.

WARDROBE

Twin Textures.

A beautiful combination of twin textures
- Glossy lacquer and PVC Membrane
cover this open wardrobe that comes with
exclusive handles less designer doors.





ALIYA

Vintage Veneer.

Classy and evergreen, this design that comes with an elegant designer door and built in handles, is a throwback to the vintage veneer look.

Dual Tone.

Dual tone finishes of Veneer and Matt Pu on exclusive handles less designer doors give this openable wardrobe a highly tasteful look.



Chequered Class.

An exclusive designer door chequered with PU lacquered glossy and Matt finish forms the chassis for a European Overlay Sliding System that finishes a class look.

Masterful Matte.

The PU Matt finished lacquered door that comes with beautiful designer handles and inbuilt LED lights is a masterful take on the classic matte finish.

ANGELINA

Remarkably Reflective.

A European In Line Sliding System covered with a glossy lacquer finished designer door with inbuild matt lacquered handles finishes a remarkably reflective design.

Lovely Levels.

This level-based concept finished with glossy lacquer provides a truly unique appearance to this design that comes with a European Synchro Sliding System.





Stylish Stripes.

A trio of stripes run across this exclusive designer door that combines PU lacquered glossy and matt finish and comes equipped with a European Overlay Sliding System.

Internal Modules



OW/SW 01



OW/SW 02



OW/SW 03



OW/SW 04



OW/SW 09



OW/SW 10



OW/SW 11



OW/SW 12



OW/SW 05



OW/SW 06



OW/SW 07



OW/SW 08



OW 13



OW/SW 14



OW/SW 15



OW 16

Internal Modules



OW 17



OW 18



OW 19



OW/SW 22



OW/SW 27



OW/SW 28



OW/SW 29



OW 30



OW/SW 23



OW/SW 24



OW/SW 25



OW/SW 26



OW/SW 31



OW/SW 32



OW/SW 33



OW/SW 34



Internal Modules



OW/SW 35



OW 36



OW/SW 37



OW 38



OW/SW 43



OW/SW 44



OW/SW 45



OW/SW 46



OW 39



OW 40



OW/SW 41



OW/SW 42



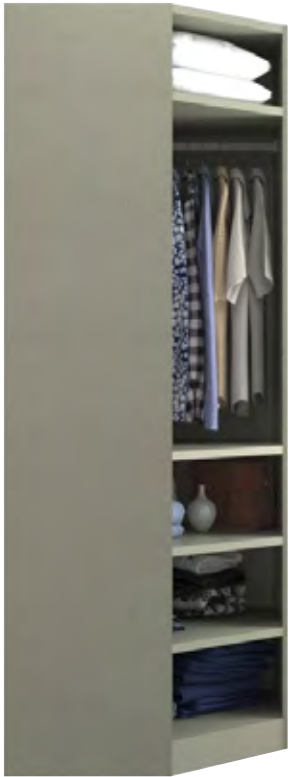
OW/SW 47



Internal Modules



Corner Units



OW 20 A



OW 21 A



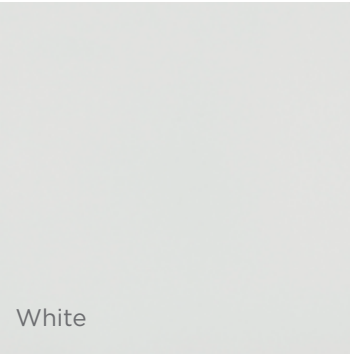
OW 20 B



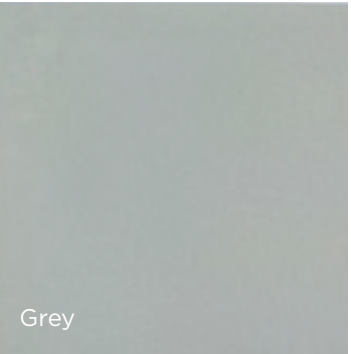
OW 21 B



Internal Colours



White



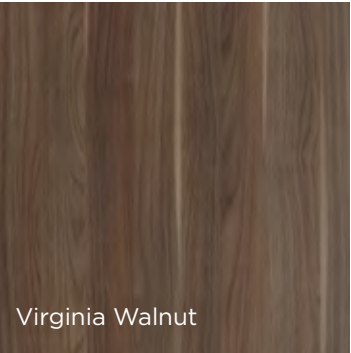
Grey



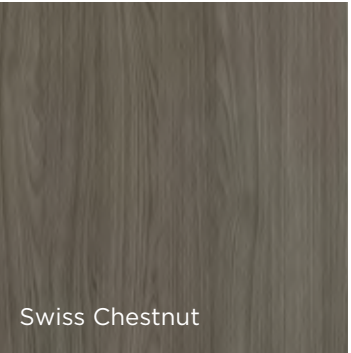
Twist Ivory



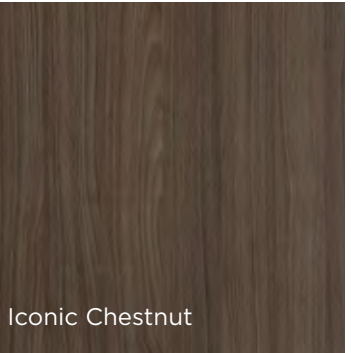
Twist Grey



Virginia Walnut



Swiss Chestnut



Iconic Chestnut

Base Materials

Particle Board/MDF/BWR/BWP

Height (in millimetres):

1950, 2000, 2050, 2100, 2150, 2200, 2250, 2300, 2350, 2400



Wardrobe Accessories



Side-mounted hanger rod



Top-mounted hanger rod



Jewellery tray



Accessory tray



Trousers rack



Shoe rack



Drawer Fascia



Akila



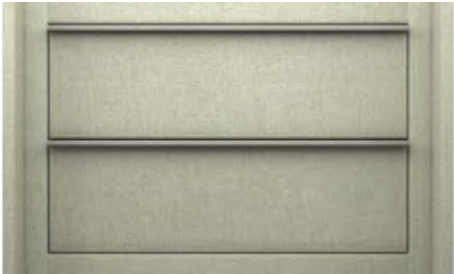
Nubia



Eugiene



Rebeka



Xena A



Mandisa



Carmen



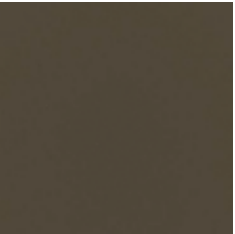
Xena B



Sofia



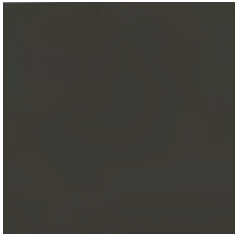
Range of Finishes



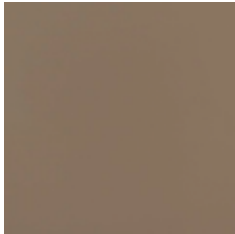
Acryglass



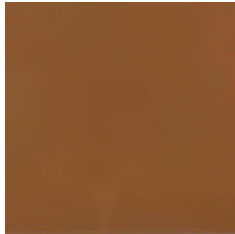
Acrylic - 2S



Acrylic SR



Acrylic SR Premium



Back Painted Glass Glossy



Back Painted Glass Satin



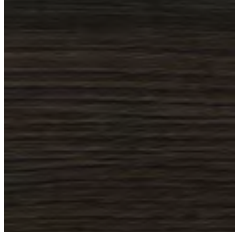
Back Painted Glass Perlised



Egger - Deep Textured



Egger - Synchronised Honeycomb



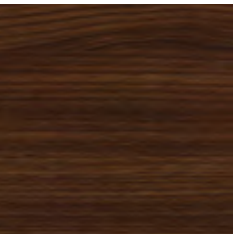
Egger - Synchronised Pore (Feelwood)



Egger - Perfect Sense



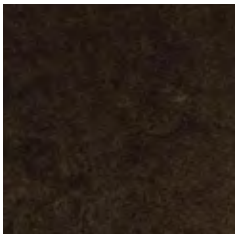
Fenix NTM



Laminate



Gloss Meister



One Skin - Matt



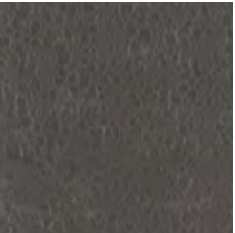
One Skin Glossy



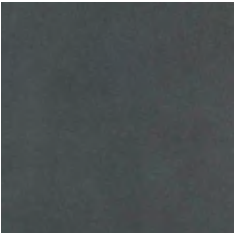
PU Painted - Glossy



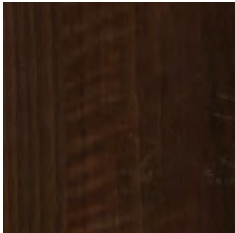
PU Painted - Matt



PU Painted Bush Hammered



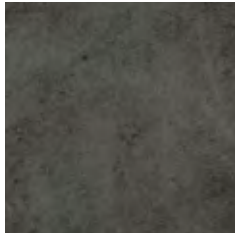
PU Painted - Pearlised



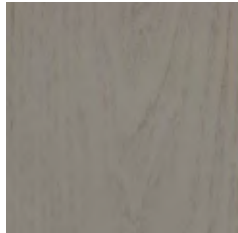
PVC Membrane



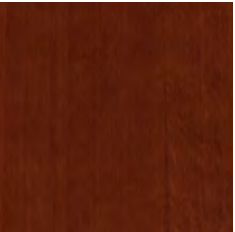
Rauvisio Brilliant (Rehau)



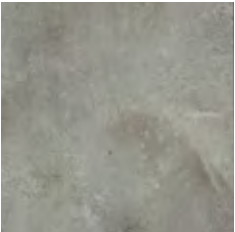
Rauvisio Crystal (Rehau)



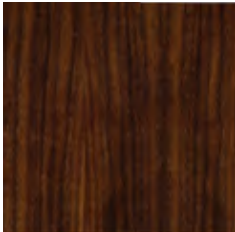
Solid Wood - White Ash



Solid Wood (Stain)



UV Lacquered



Veneer

Indoline

Indoline Industries Pvt Ltd
B-68/1, Behind Taj Residency
MIDC, Ambad, Nashik 422 010
T +91 253 6639100
info@indoline.in
indoline.in